



# A Protected Area Network Towards A Sustainable Landscape For Sabah:

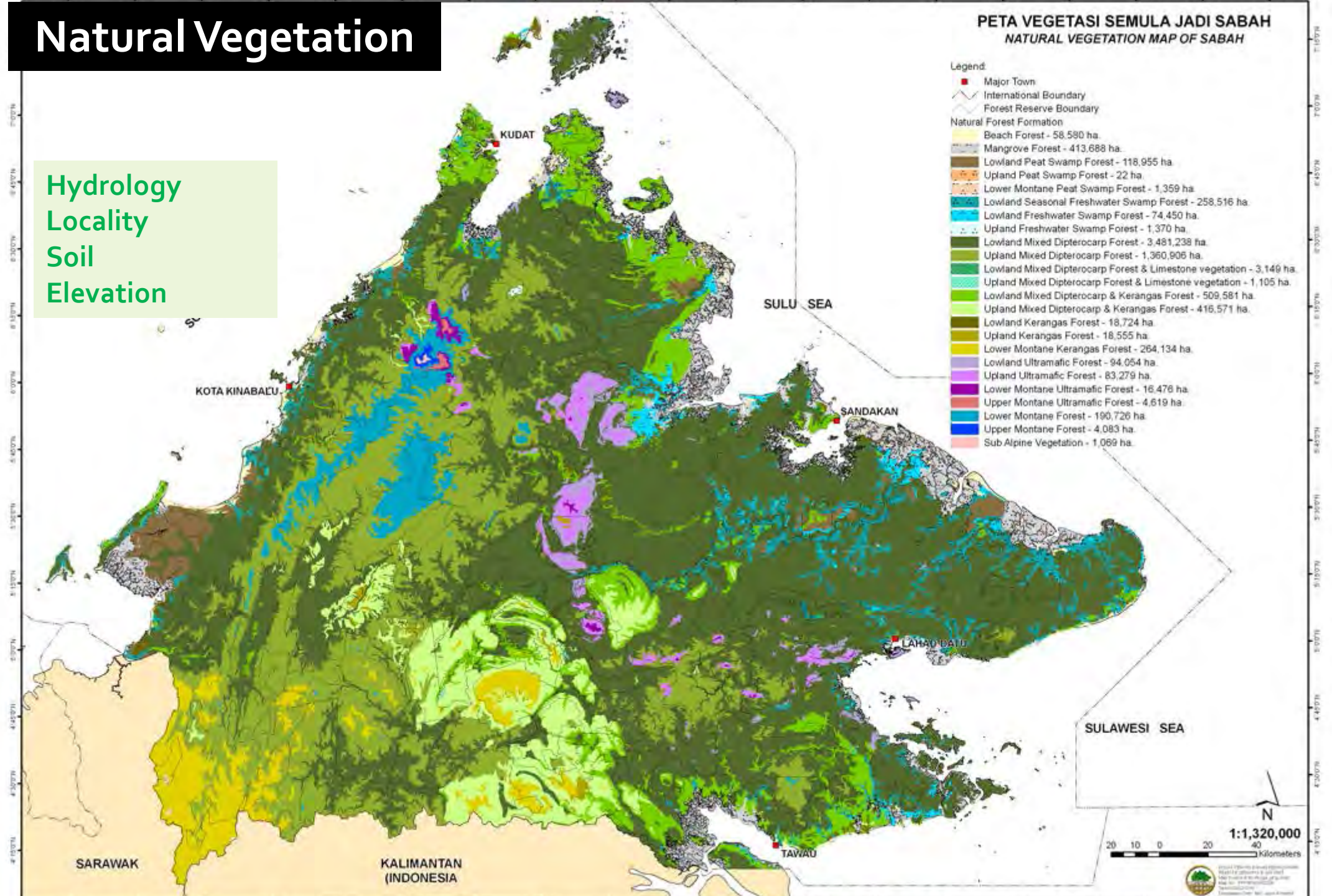
*An opportunity for jurisdictional certification*

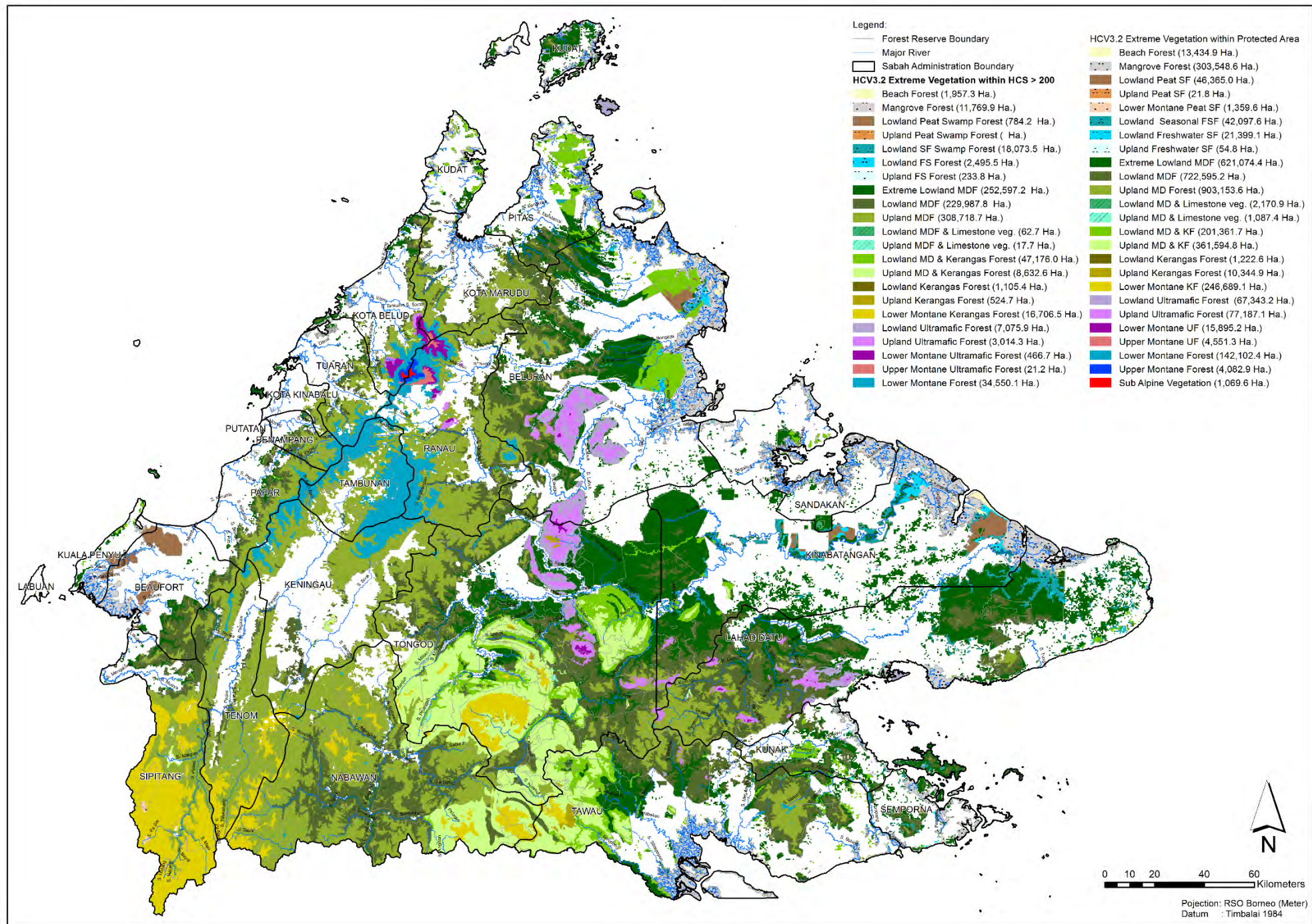
**Robert C. Ong**  
**Sabah Forestry Department**

**RSPO RT 2022, Kuala Lumpur**  
**29-30 Nov, 2022**

# Natural Vegetation

Hydrology  
Locality  
Soil  
Elevation



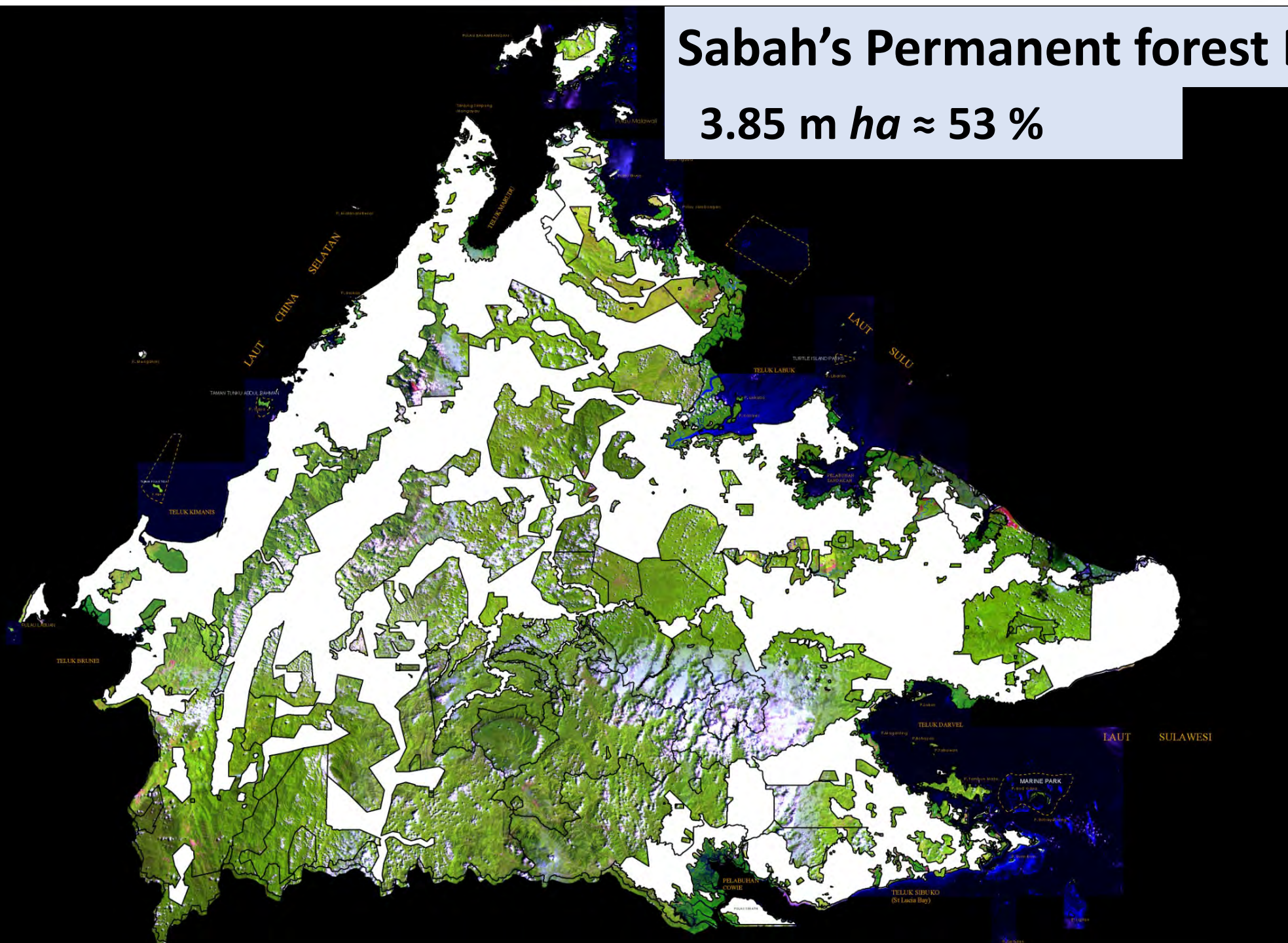


Oil Palm:  $\approx$  1.6 million *ha*

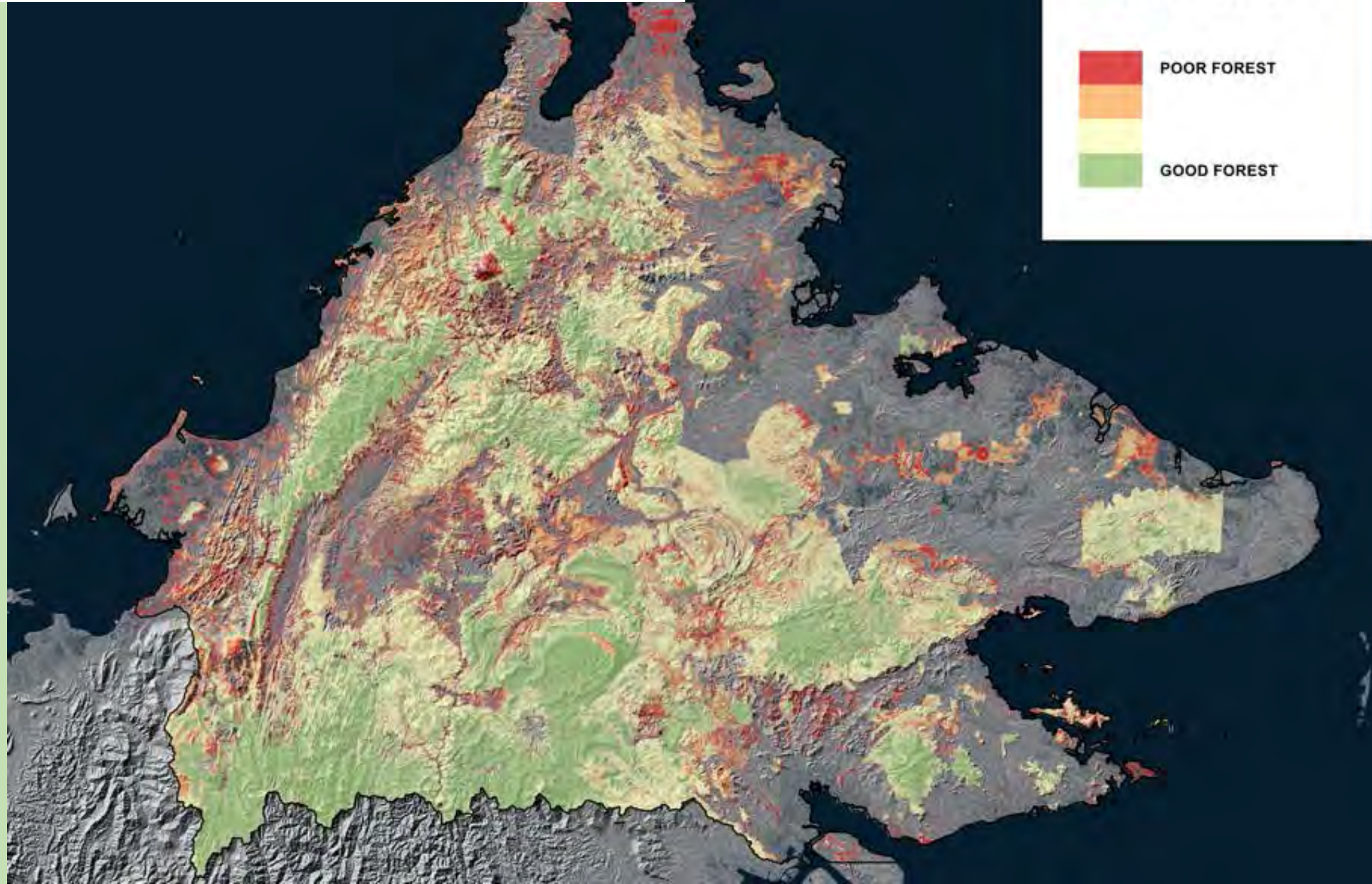


# Sabah's Permanent forest Estate 2021

3.85 m *ha*  $\approx$  53 %



# EXTENT OF CURRENT FOREST COVER & QUALITY



# Area under conservation

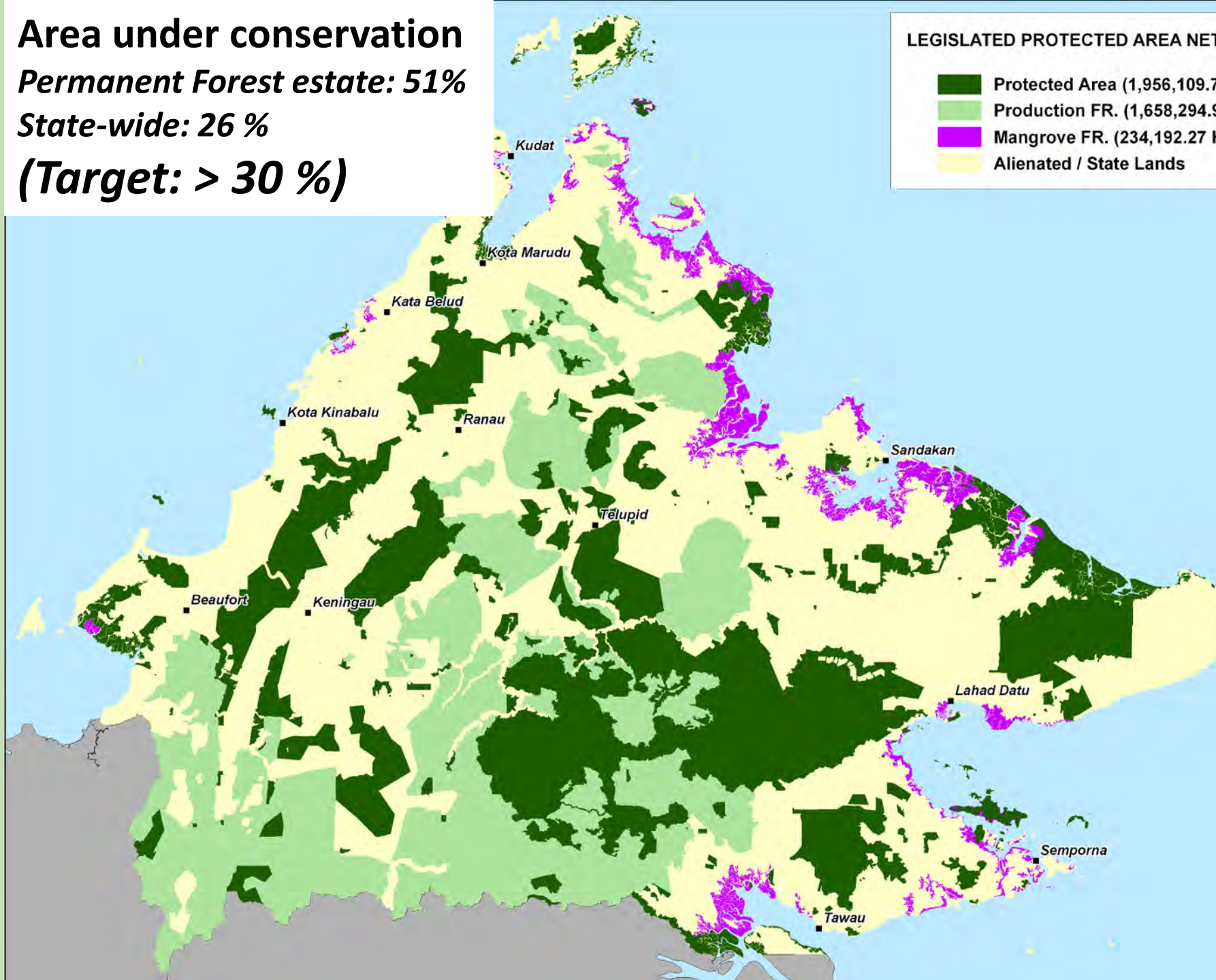
*Permanent Forest estate: 51%*

*State-wide: 26 %*

*(Target: > 30 %)*

## LEGISLATED PROTECTED AREA NETWORK

- Protected Area (1,956,109.78 Ha.)
- Production FR. (1,658,294.95 Ha.)
- Mangrove FR. (234,192.27 Ha.)
- Alienated / State Lands



# Increase in protected areas

2000

SABAH'S PERMANENT FOREST ESTATE, 2000

Legend:

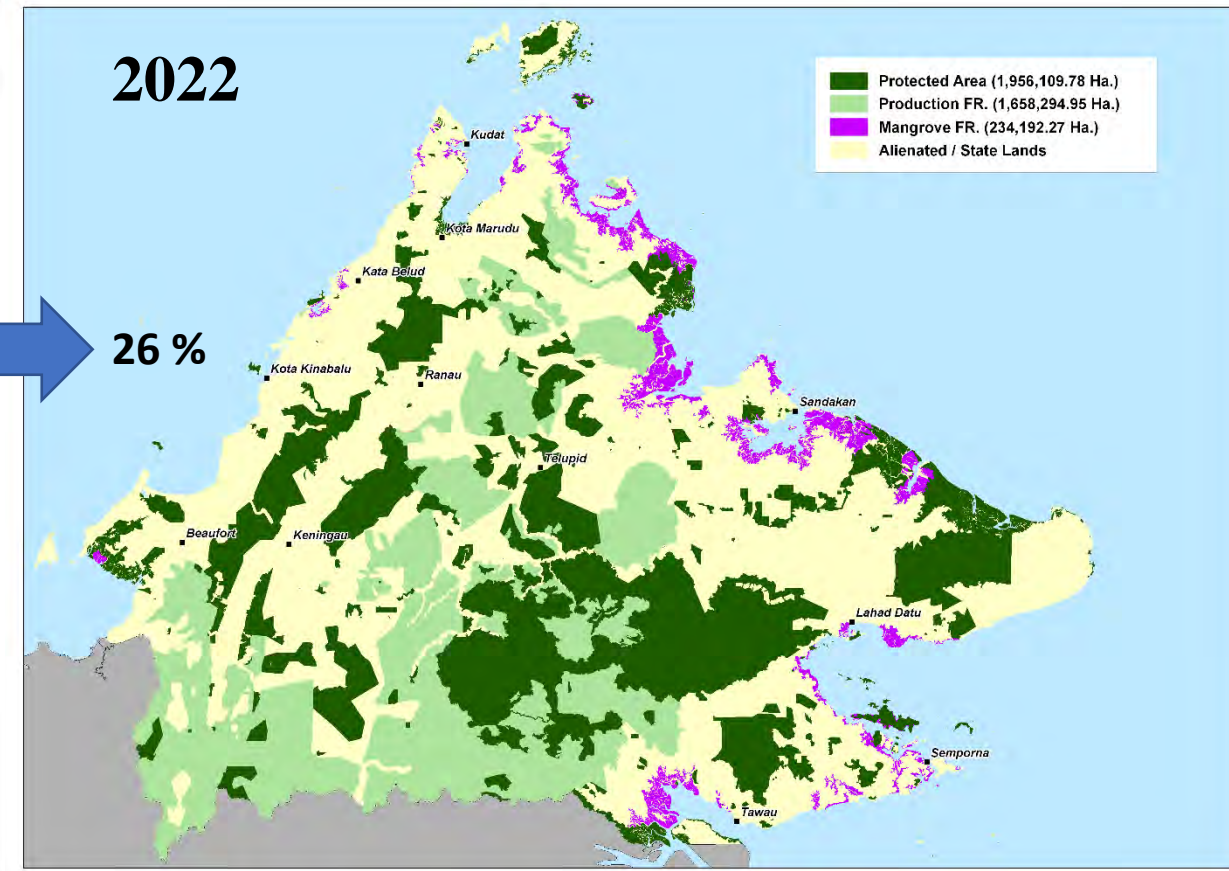
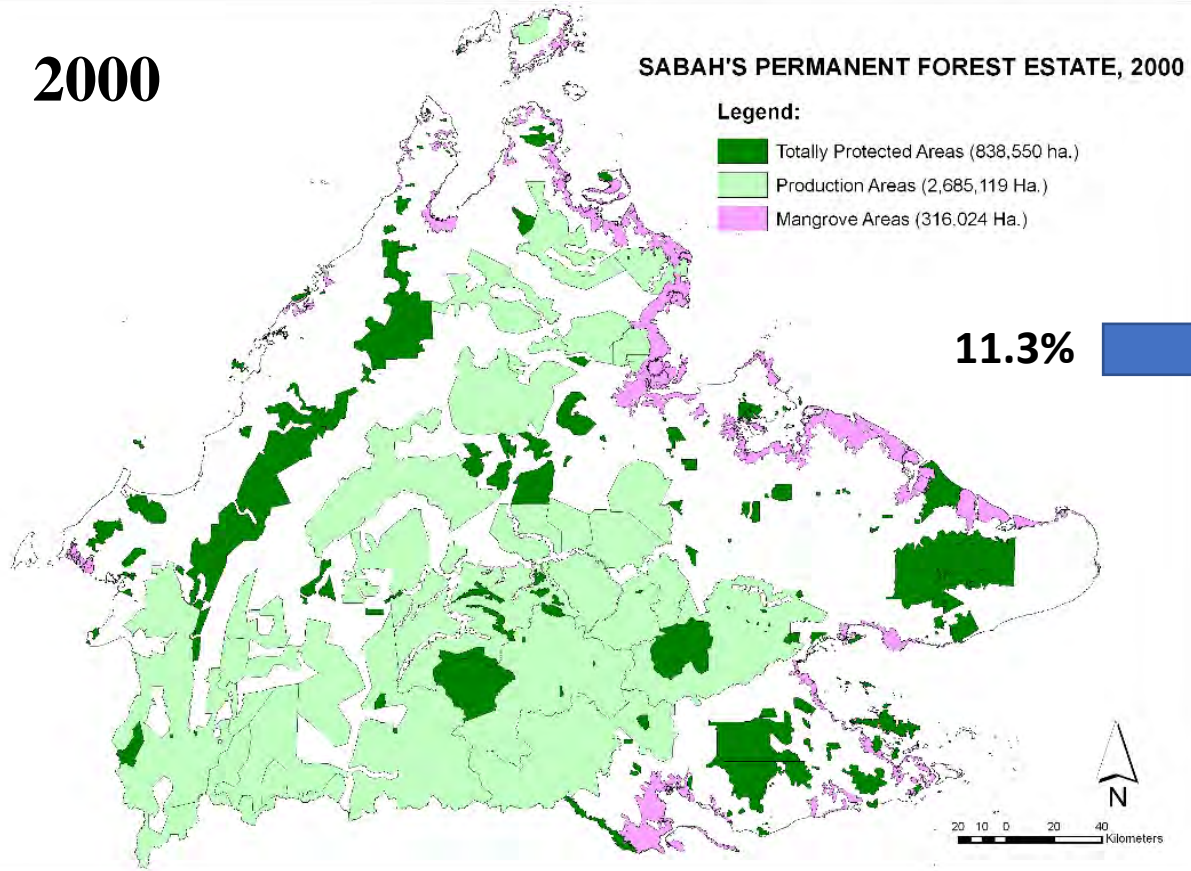
- Totally Protected Areas (838,550 ha.)
- Production Areas (2,685,119 Ha.)
- Mangrove Areas (316,024 Ha.)

11.3%

2022

- Protected Area (1,956,109.78 Ha.)
- Production FR. (1,658,294.95 Ha.)
- Mangrove FR. (234,192.27 Ha.)
- Alienated / State Lands

26%

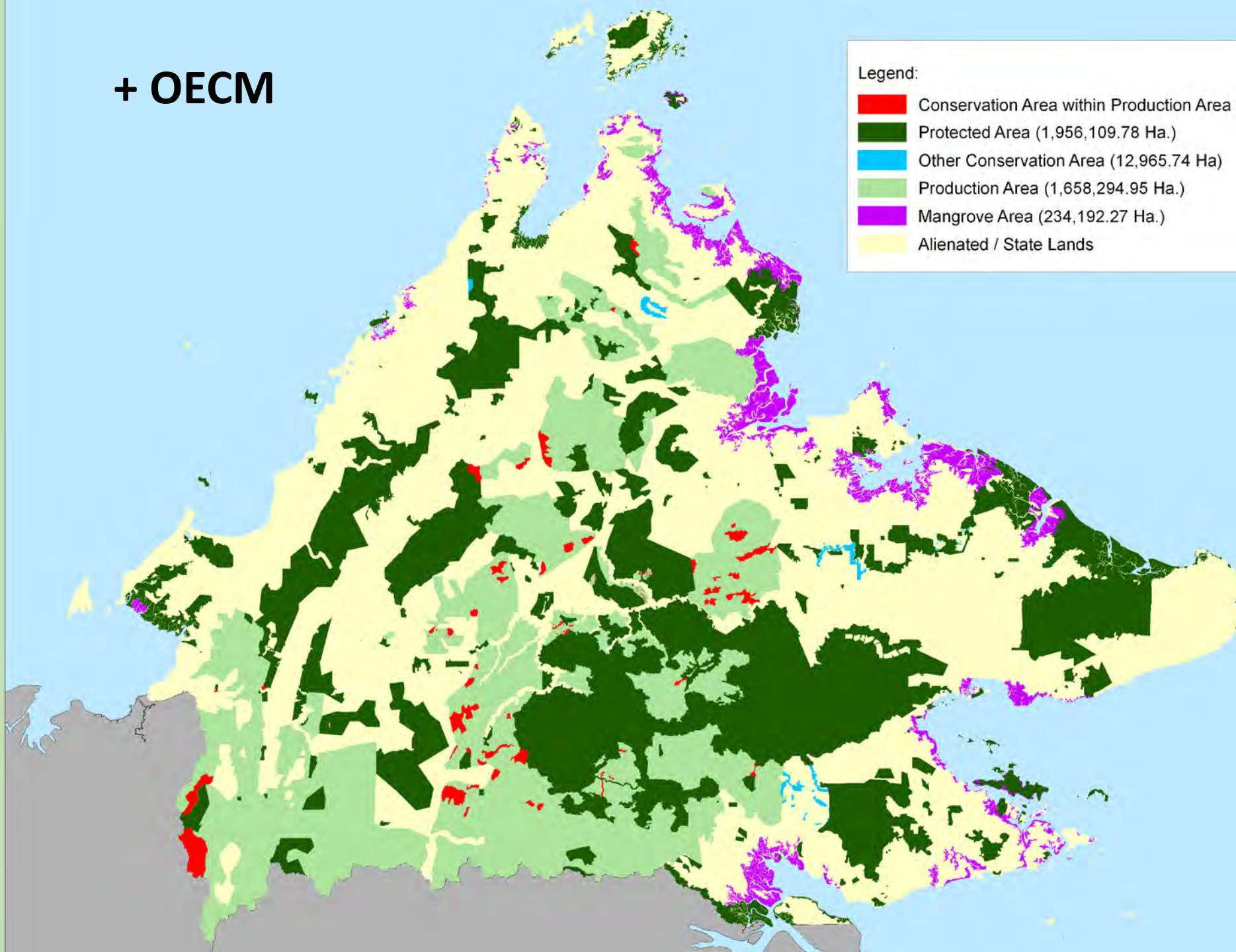




# + OECM

## Legend:

- Conservation Area within Production Area (81,096 Ha.)
- Protected Area (1,956,109.78 Ha.)
- Other Conservation Area (12,965.74 Ha)
- Production Area (1,658,294.95 Ha.)
- Mangrove Area (234,192.27 Ha.)
- Alienated / State Lands





Conservation & ecosystems services

---

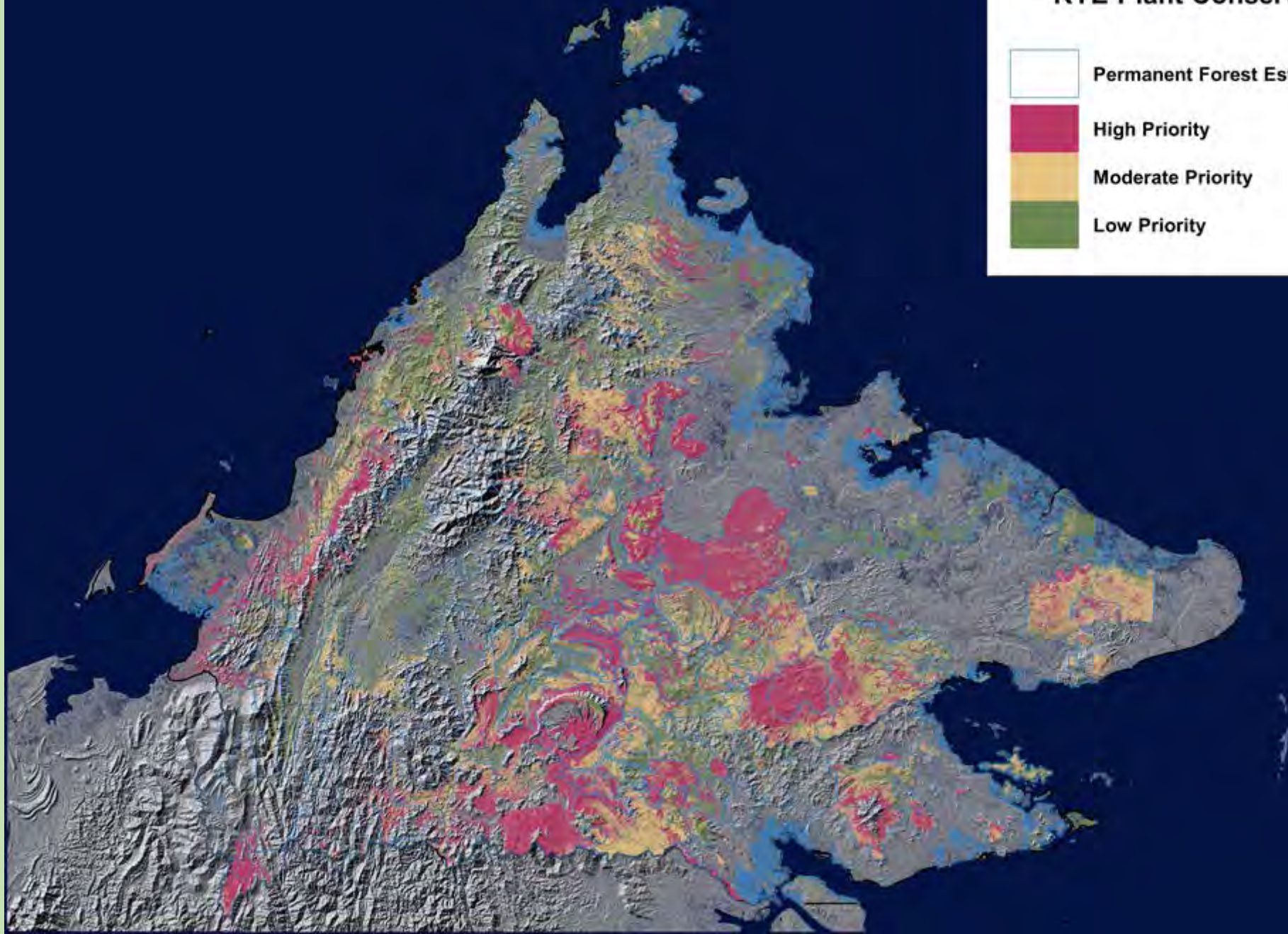
# **An assessment of Sabah's protected area network**

- **To identify areas critical for biodiversity conservation;**
- **To recommend strategic actions towards achieving at least 30% coverage of protected areas in Sabah;**
- **To support the jurisdictional certification of timber production and agricultural commodities from Sabah;**
- **To provide management and monitoring recommendations to ensure that production activities do not negatively impact protected areas;**

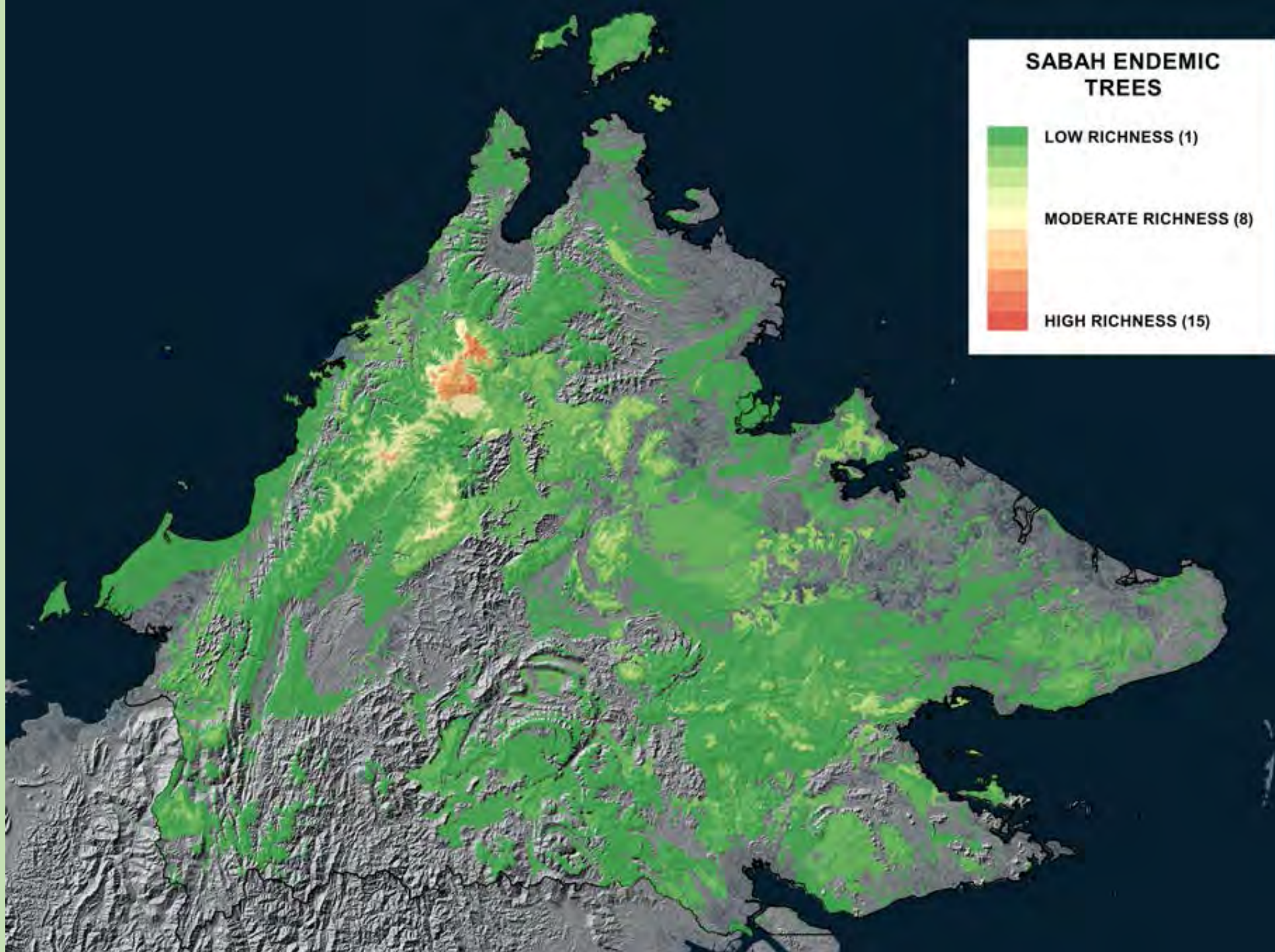
## **A landscape approach**

- ID & map rare, threatened, and endangered species + Endemic (Flora & Fauna)
- ID & map rare and endangered ecosystems

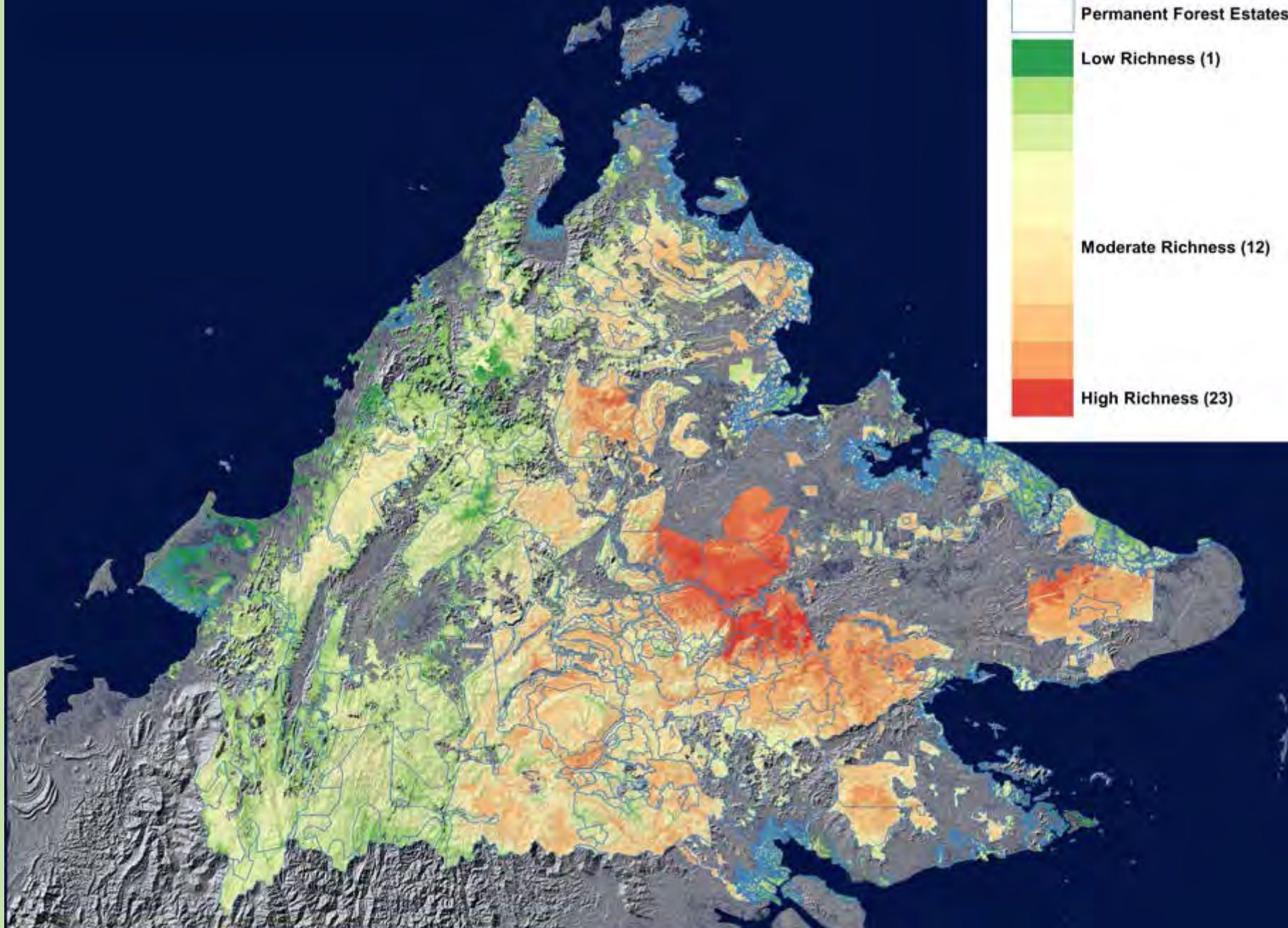
## Priority Forest For RTE Plant Conservation



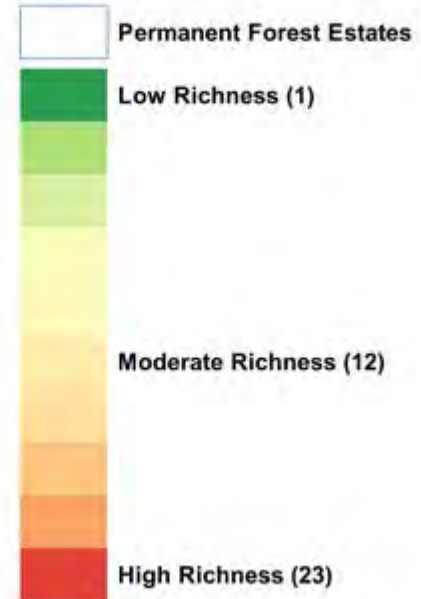
## SABAH ENDEMIC TREES



# Faunal Distribution & Richness



## Faunal Distribution and Richness



# ECOSYSTEM RED LIST

- Rare ecosystems (1 % of total landmass or <700,000 ha)
- Threatened ecosystems
  - Vulnerable, 50-70% area reduction
  - Endangered , 70-90% area reduction
  - Critically Endangered, > 90% area reduction



## RTE Ecosystems



**CRITICALLY ENDANGERED**  
LOWER MONTANE PEATSWAMP  
FOREST (RARE)



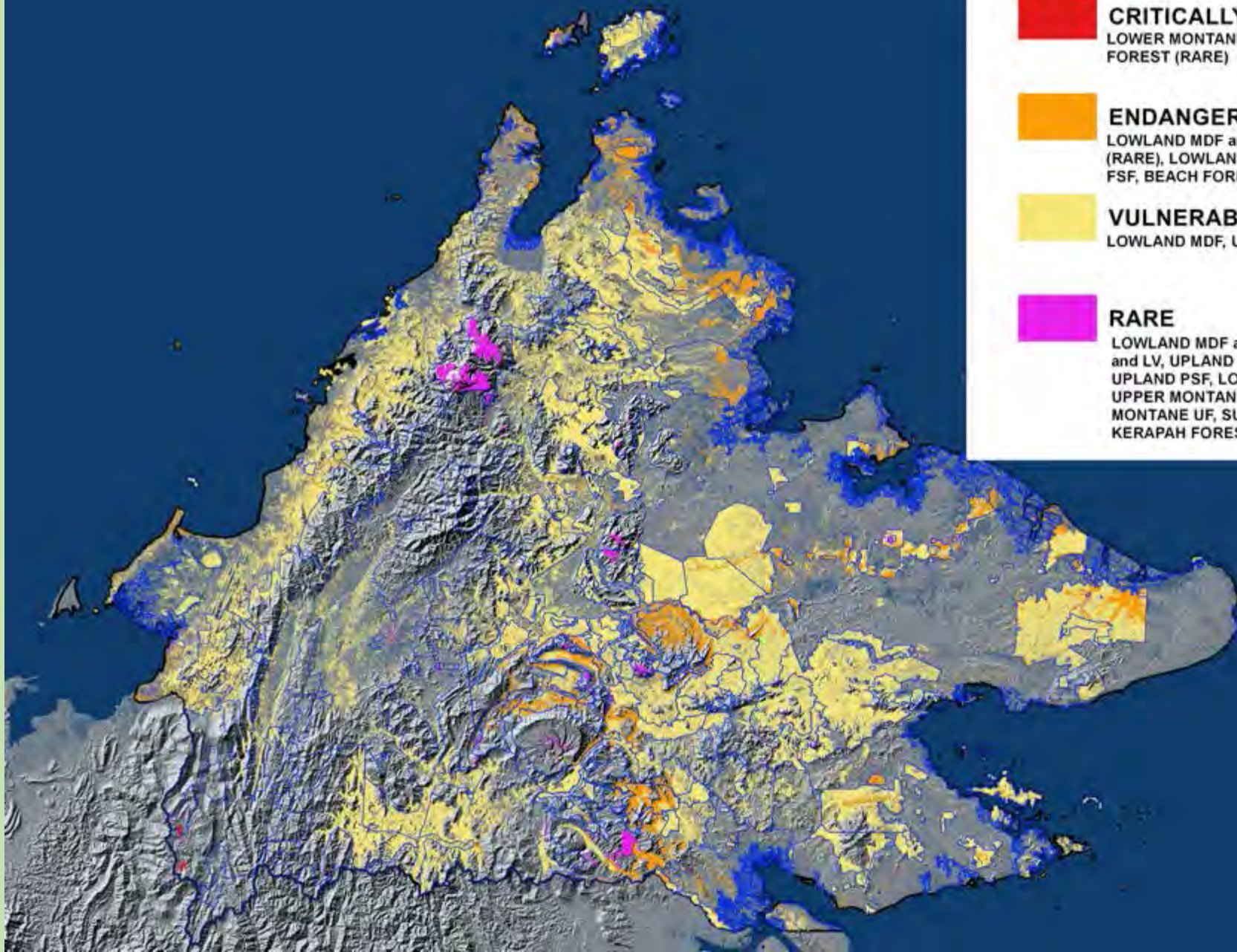
**ENDANGERED**  
LOWLAND MDF and KF, LOWLAND KF  
(RARE), LOWLAND SFSF, LOWLAND  
FSF, BEACH FOREST



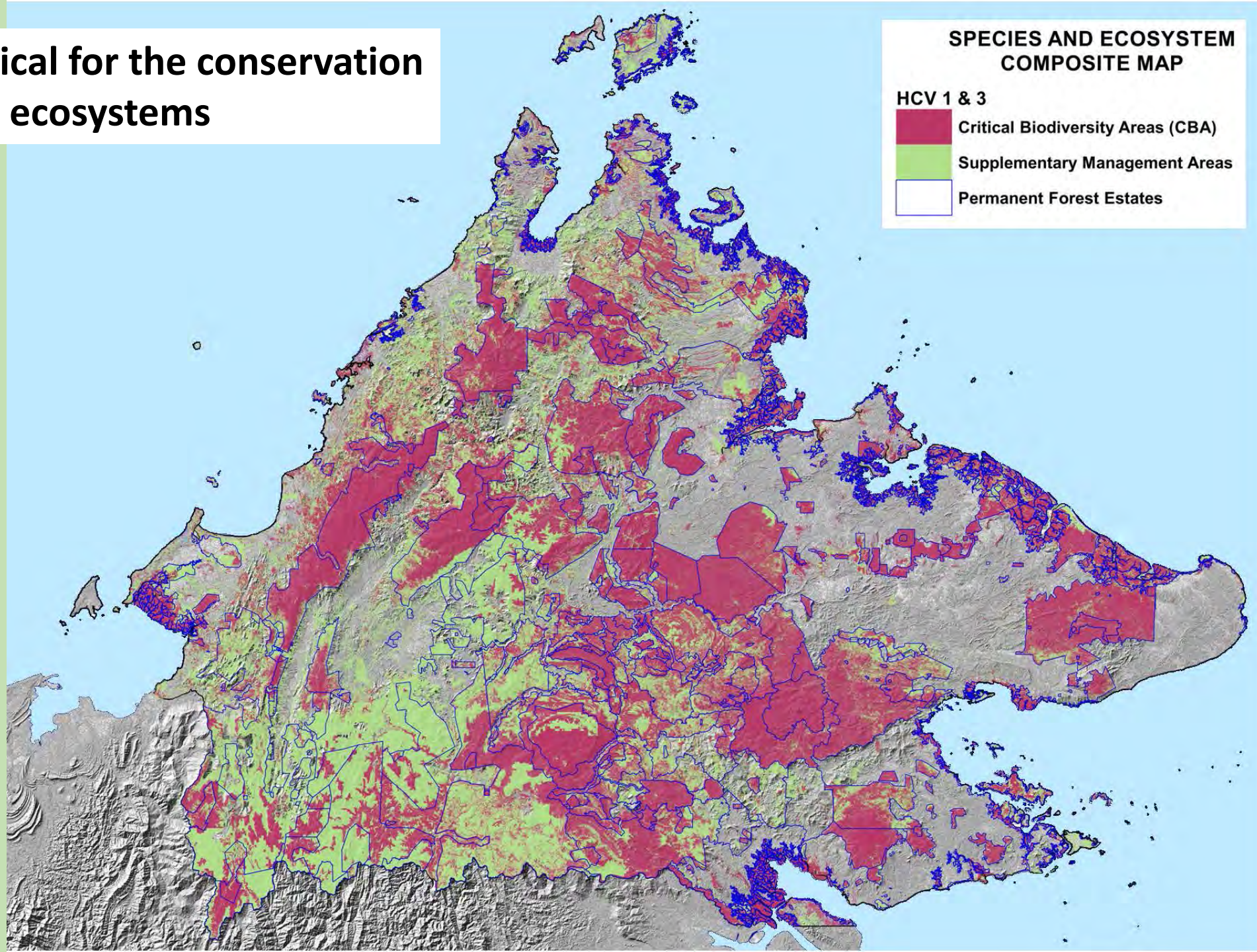
**VULNERABLE**  
LOWLAND MDF, UPLAND FSF



**RARE**  
LOWLAND MDF and LV, UPLAND MDF  
and LV, UPLAND KERANGAS,  
UPLAND PSF, LOWER MONTANE UF,  
UPPER MONTANE FOREST, UPPER  
MONTANE UF, SUB ALPINE, UPLAND  
KERAPAH FOREST

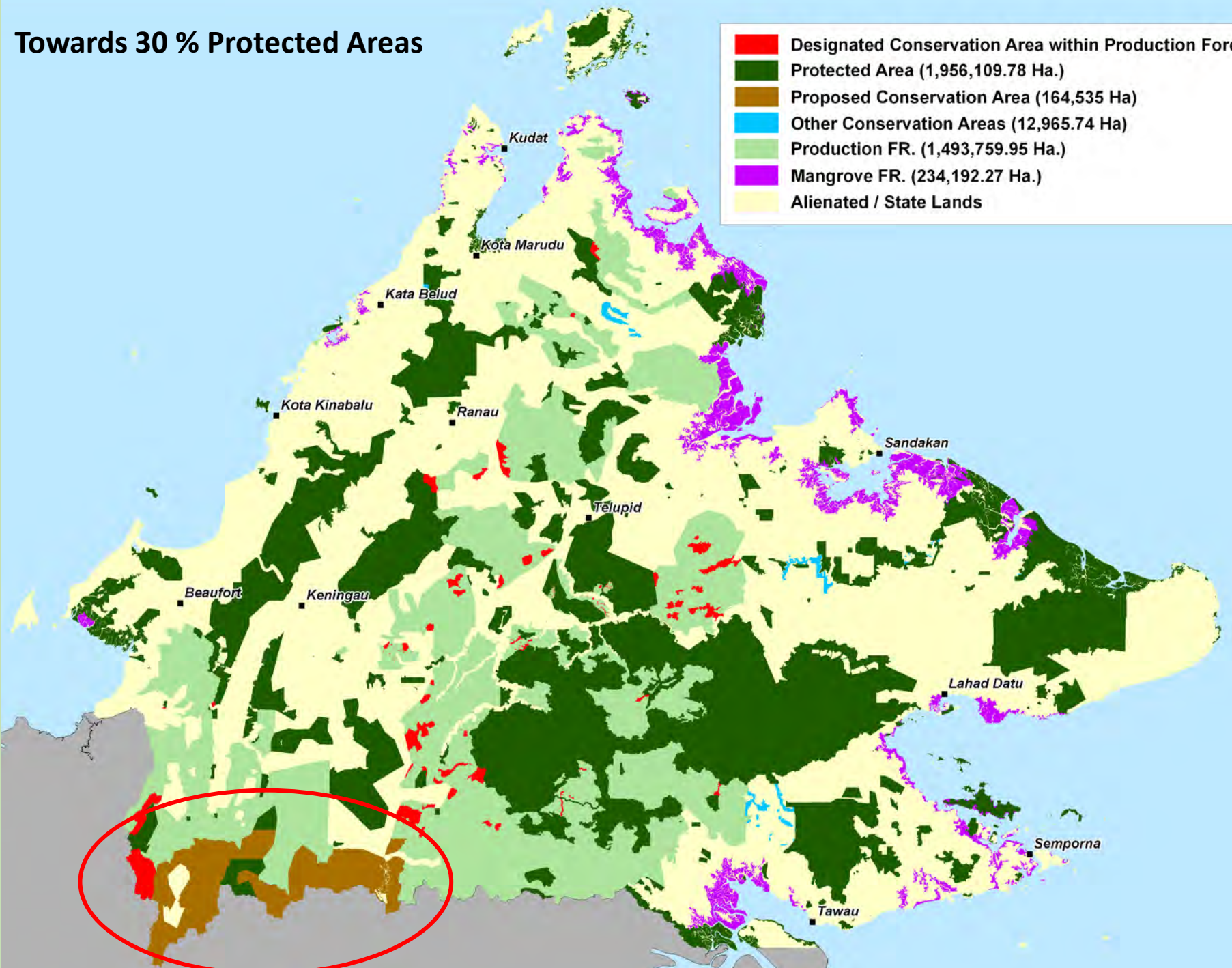
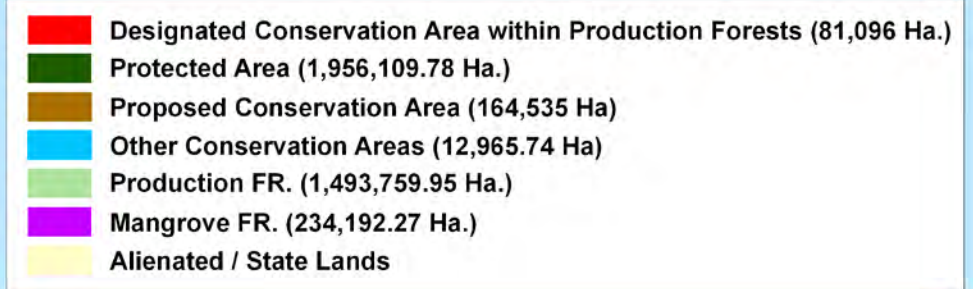


# Areas Critical for the conservation of natural ecosystems

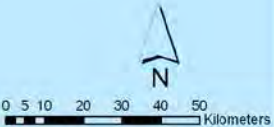
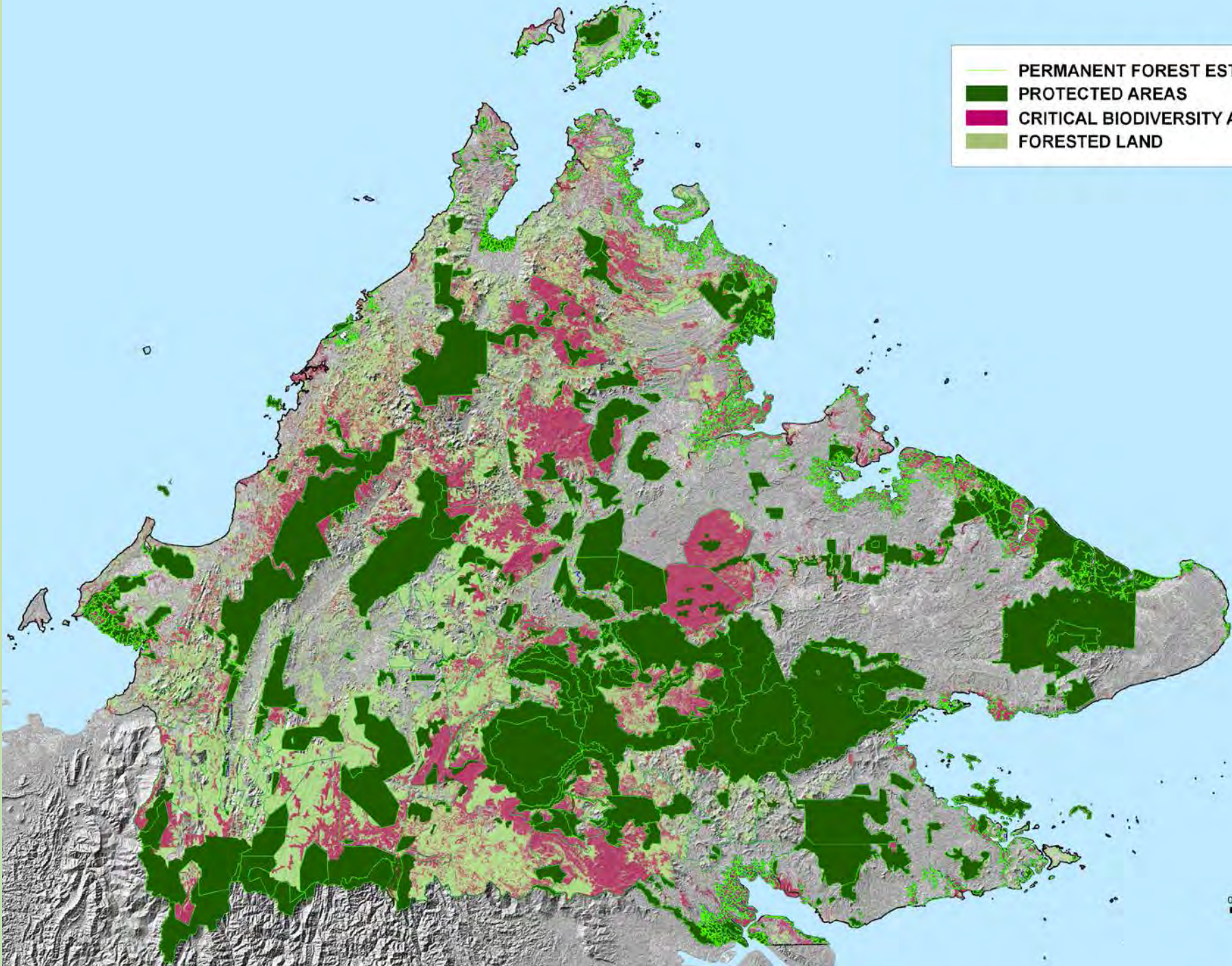




# Towards 30 % Protected Areas



PERMANENT FOREST ESTATE  
PROTECTED AREAS  
CRITICAL BIODIVERSITY AREA  
FORESTED LAND



РУКОВОДСТВО ПОСРЕДСТВОМ  
ЗАШТИТЕ ТЕРИТОРИЈА И ПОСРЕДСТВОМ  
МАП СЛУЖБЕ Д.П.РОДНИХ ПОСРЕДСТВОМ  
МАП СЛУЖБЕ Д.П.РОДНИХ ПОСРЕДСТВОМ  
Државни центар за заштити територија

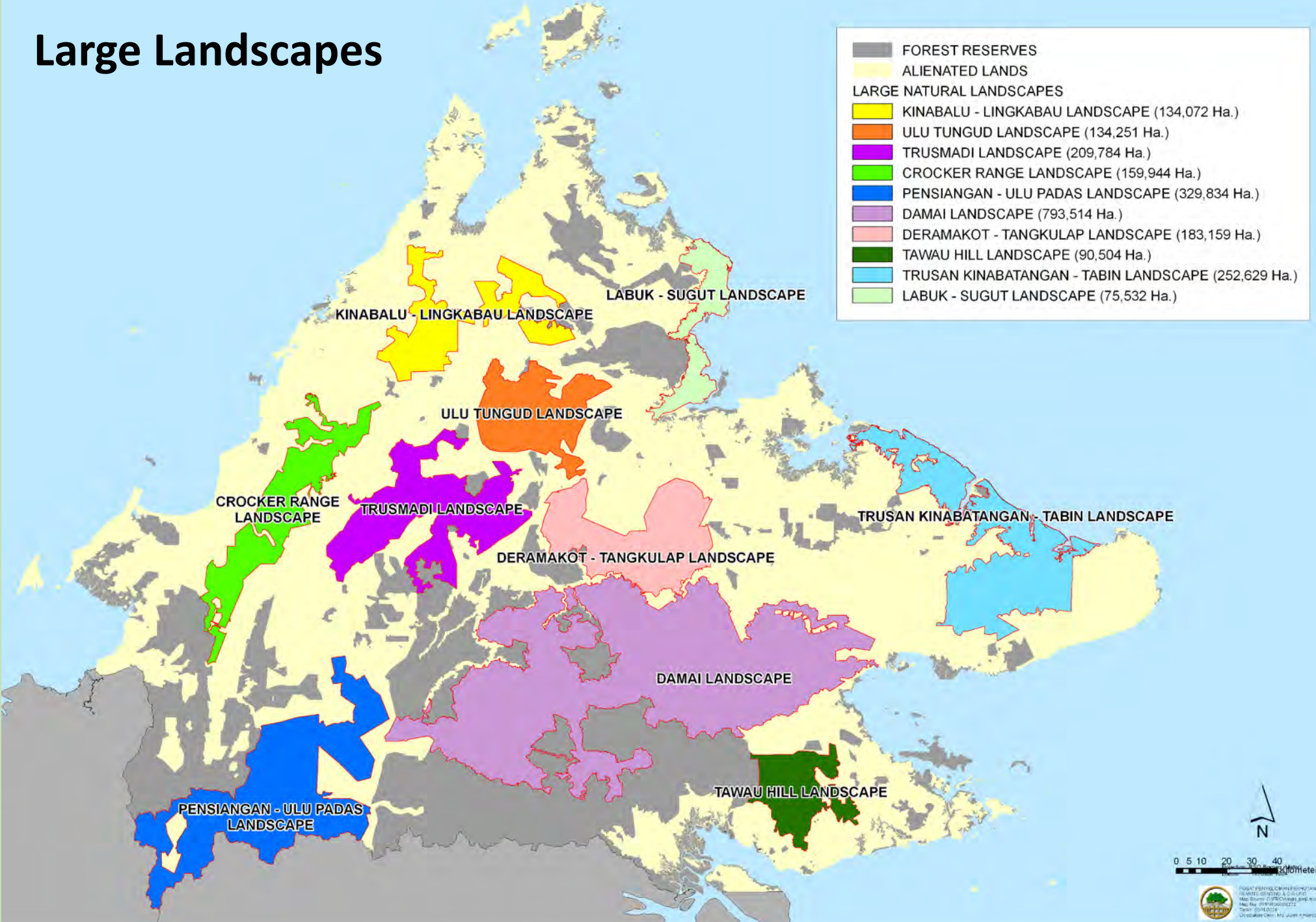
Protected area category	Area (ha)	Cumulative % of Sabah's landcover
Legislated Protected Areas	1,956,110	26
Other conservation areas	+ 94,062	27.7
Proposed additional conservation areas	+ 164,535	29.8
Mangrove forest reserves	+234,192	33.1

## Large Natural Landscapes

**Large natural landscape-level ecosystems and ecosystem mosaics that contain viable populations of the great majority of the naturally occurring species in natural patterns of distribution and abundance.**

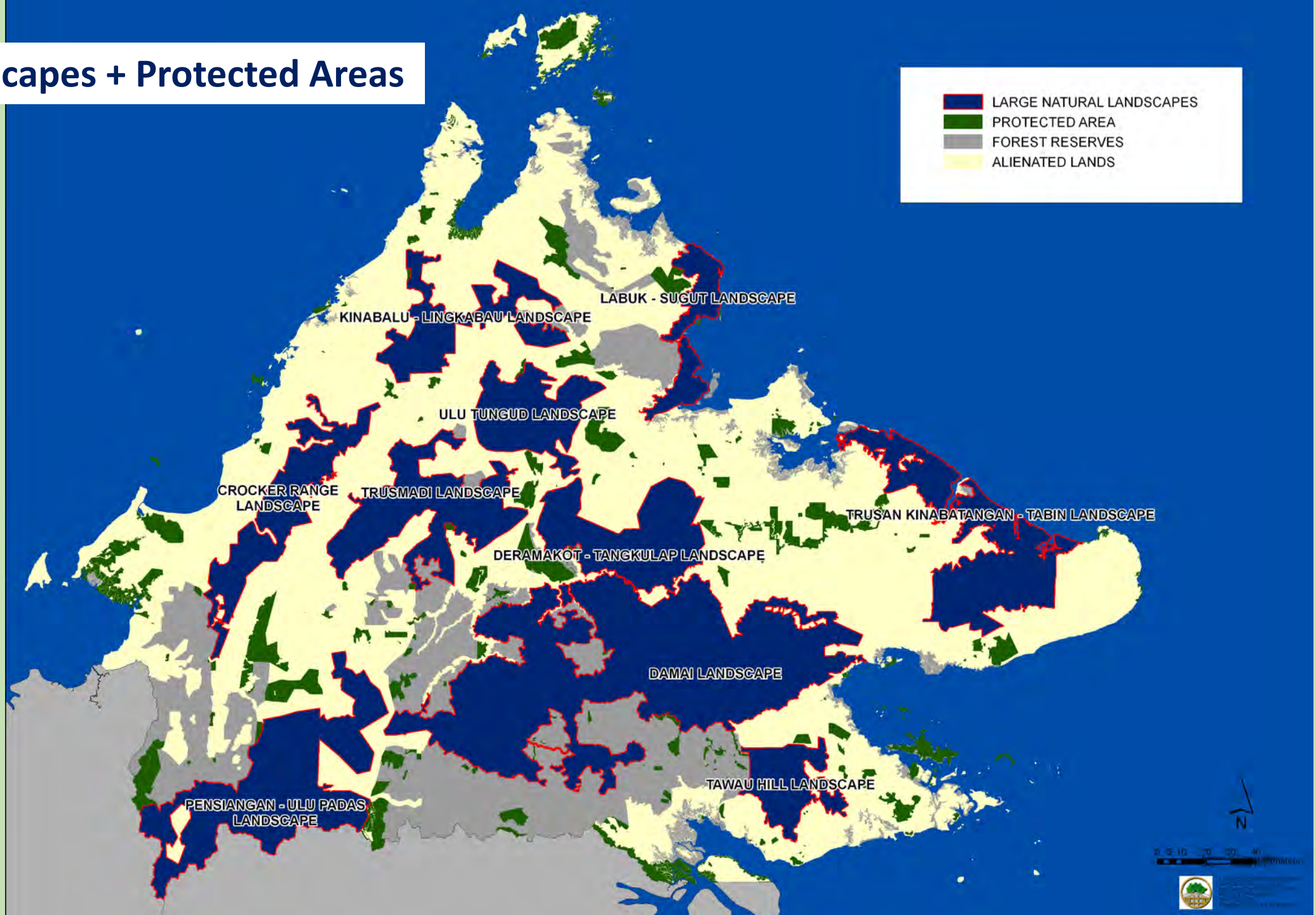
- **Contiguous**
- **$\geq 50,000$  *ha***
- **Land use: Protected area + NFM**

# Large Landscapes





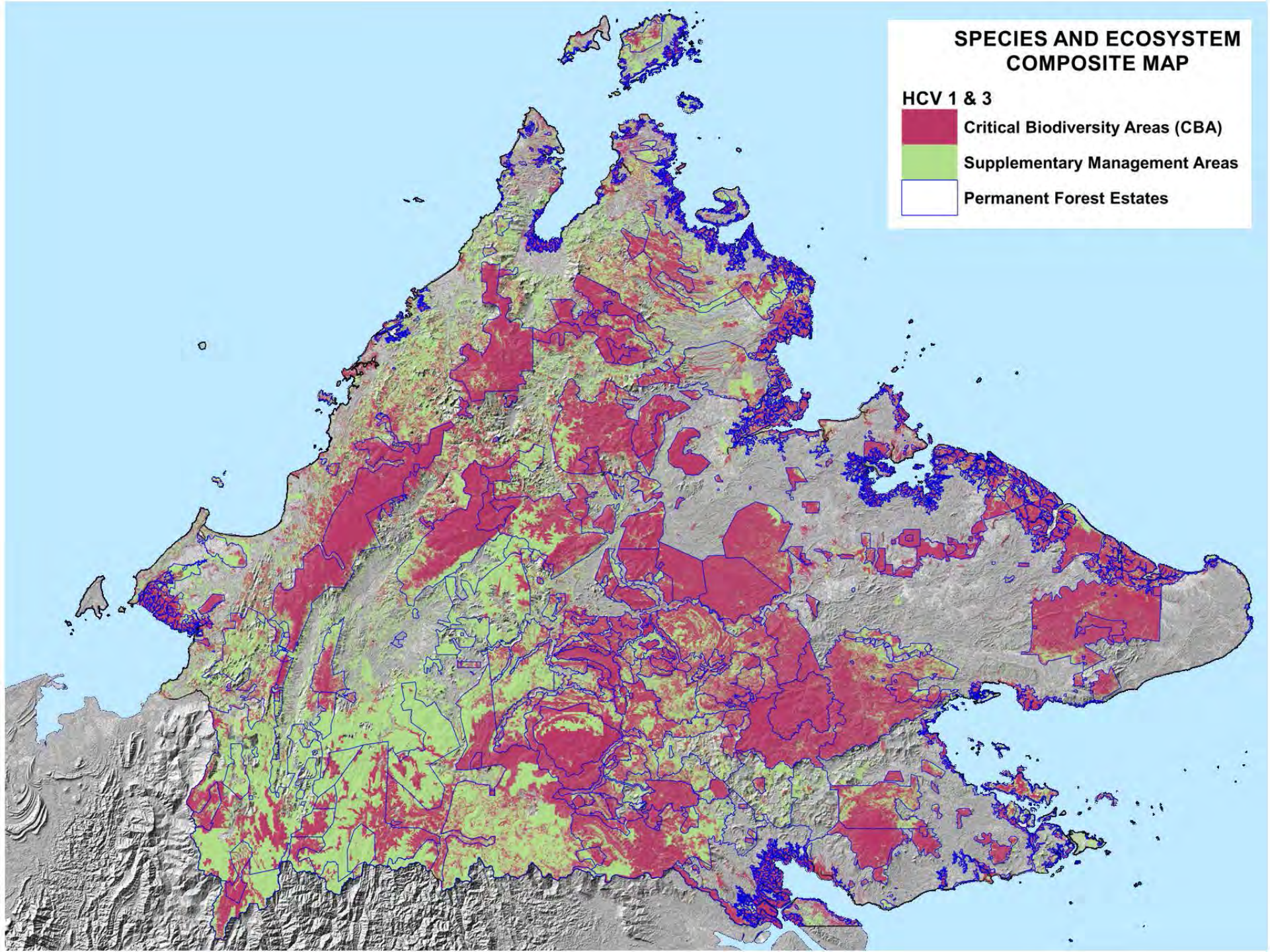
# Large Landscapes + Protected Areas








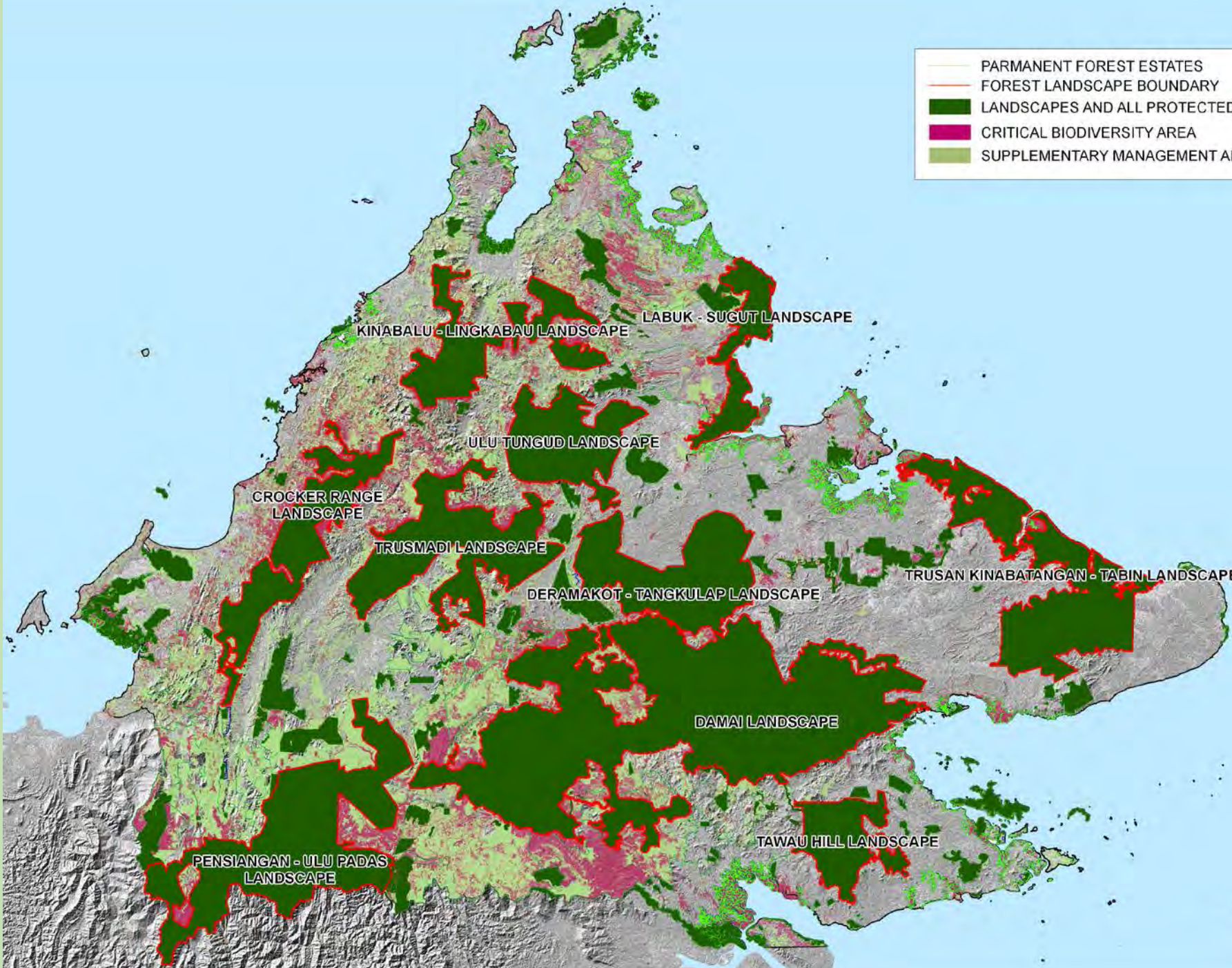
# SPECIES AND ECOSYSTEM COMPOSITE MAP

HCV 1 & 3

-  Critical Biodiversity Areas (CBA)
-  Supplementary Management Areas
-  Permanent Forest Estates



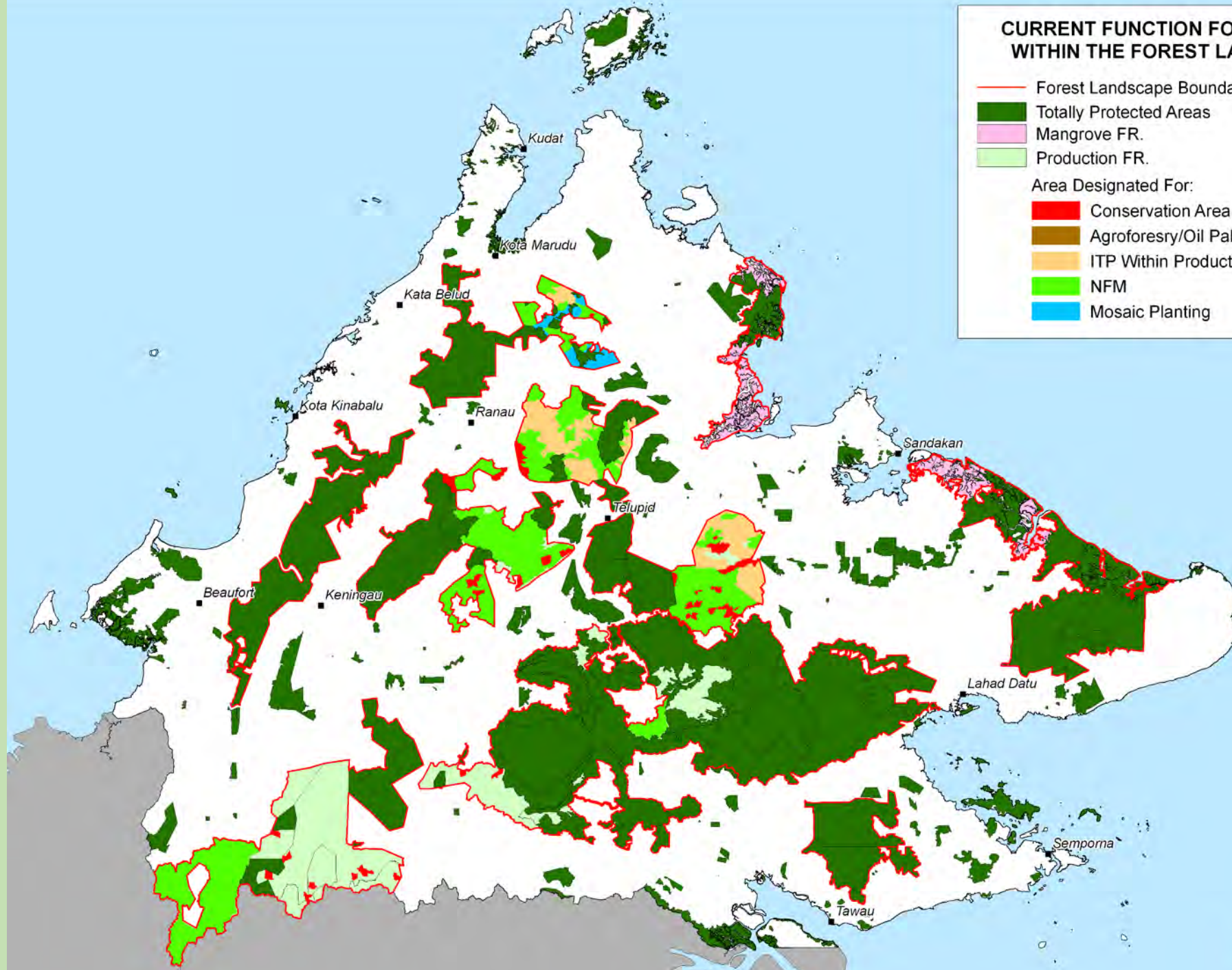
-  PARMANENT FOREST ESTATES
-  FOREST LANDSCAPE BOUNDARY
-  LANDSCAPES AND ALL PROTECTED AREA (2,812,202 HA.)
-  CRITICAL BIODIVERSITY AREA
-  SUPPLEMENTARY MANAGEMENT AREA



  
 0 5 10 20 30 40  
 Kilometers  


## CURRENT FUNCTION FOREST ZONE WITHIN THE FOREST LANDSCAPE

-  Forest Landscape Boundary
  -  Totally Protected Areas
  -  Mangrove FR.
  -  Production FR.
- Area Designated For:
-  Conservation Area within Class 2
  -  Agroforestry/Oil Palm
  -  ITP Within Production Areas
  -  NFM
  -  Mosaic Planting

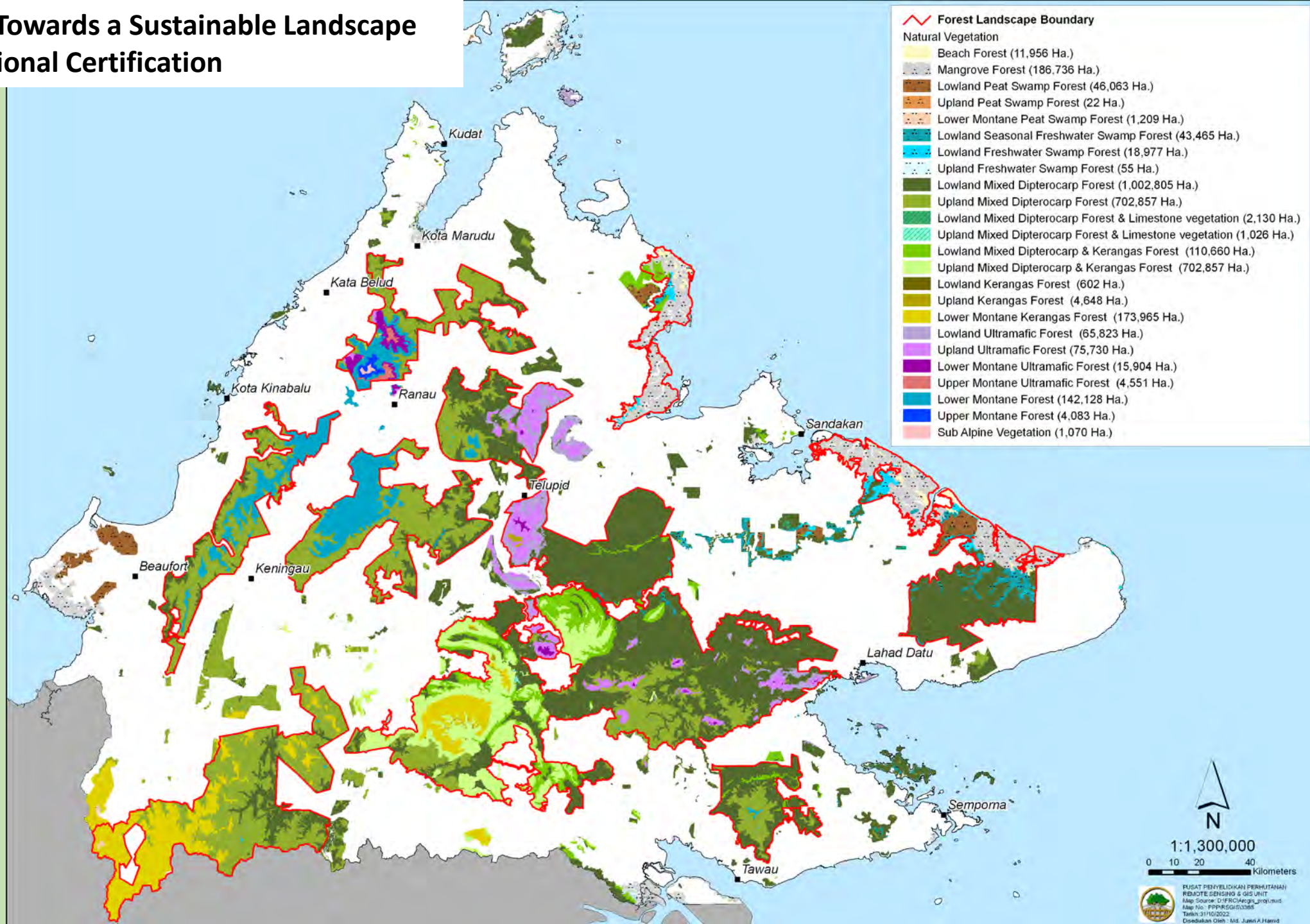


0 5 10 20 30 40  
Kilomet

Projection: RSG Borneo (Meter)  
Datum: Tomba 1984

 PUSAT PERKHIDMATAN HAYATI DAN BUKU  
MUSYAWARAH KEMENTERIAN HAYATI DAN BUKU  
KEMENTERIAN HAYATI DAN BUKU  
NO. 100, JALAN PERKHIDMATAN  
80000 KUALA BELANGA, SARAWAK  
TEL: 082-5511111  
FAX: 082-5511111

- Moving Towards a Sustainable Landscape
- Jurisdictional Certification



*Thank you for your  
attention*

**Robert.Ong@sabah.gov.my**

