

Breakout Session 9 : Palm Oil Industry to Reach Net Zero – A commitment or a Mission



SCALING UP THE SUSTAINABLE PALM OIL
VALUE CHAIN THROUGH COLLECTIVE ACTION

KOLTIVA



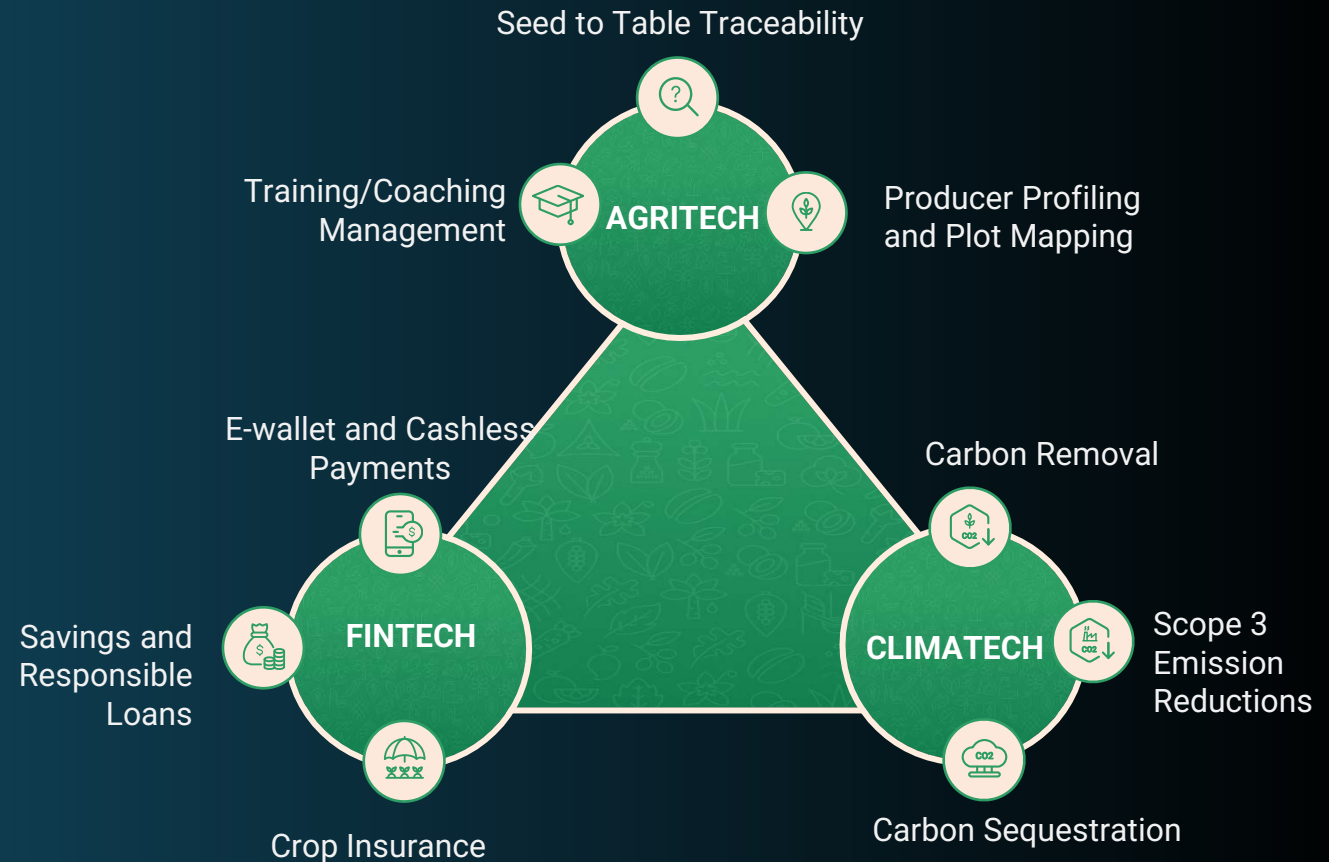
Who We Are

We are a leading agritech start-up enabling climate-resilient global supply chain to be traceable and sustainable, backed by our human-centred technology with boots on the ground.

Professional services, **beyond traceability.**

Koltiva employs hundreds of **Field Agents** across Indonesia to map and train smallholder farmers with our digital solutions.

Proprietary Technologies for all Actors in Global Supply Chains



The Problem – Climate Change



Palm Oil Industry Towards Net Zero



Land Use

Avoid
Deforestation

Avoid peat
development

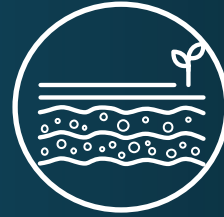
Landscape
restoration



Input

Improved
seedlings

Improved
fertilizer
application



On-Farm

Intercropping
during the first
3-4 years

Cover crops



Transport

Route
optimization

Biofuels

EV trucks



Mill Processing

Methane Capture
of POME

Composting of
POME & EFBs

Efficiency
Improvements

Challenges Towards Net Zero



**Lack of Baseline
Data for Scope 3**



**Prioritization of
Climate Action**

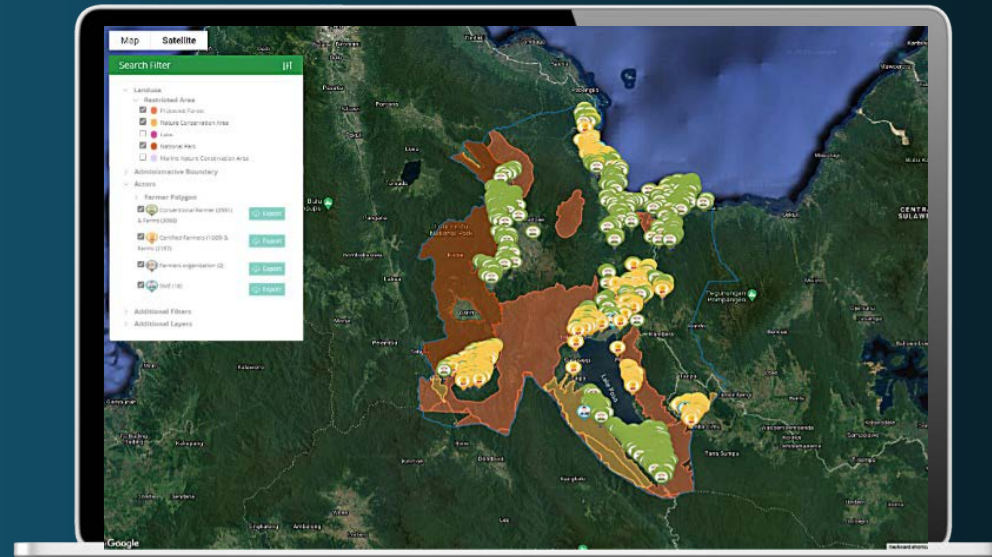
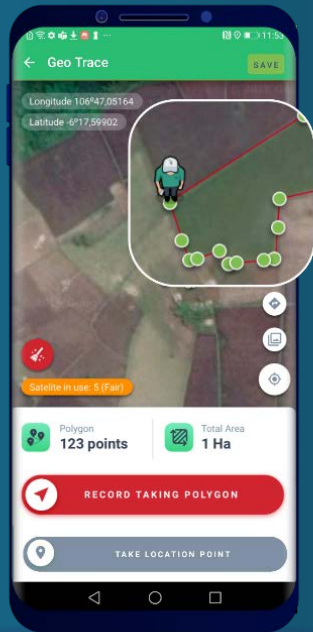


**Lack of
Resources**



**Tools to monitor
and measure**

We open the Blackbox of scope 3 emissions by **digitalizing** your upstream supply chain...



86

Mills mapped

1543

Dealers and Agents mapped

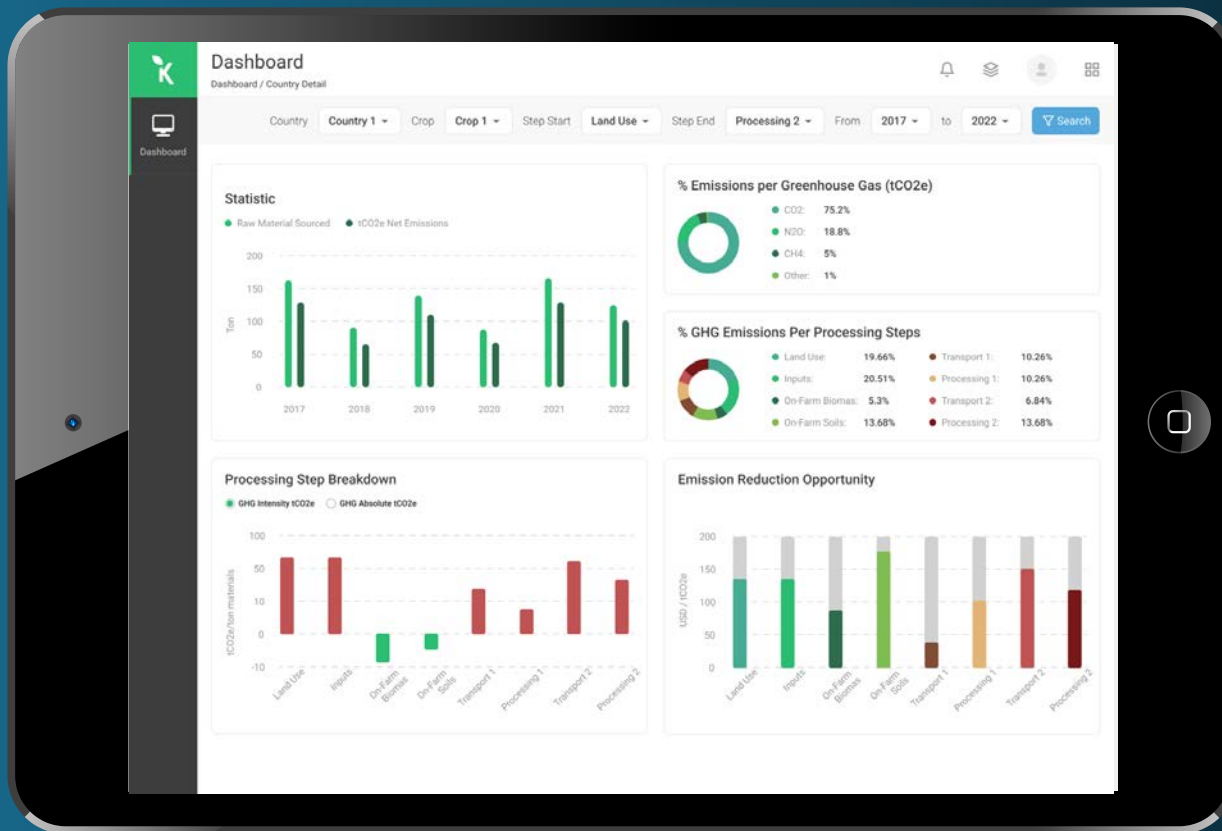
140,111

Smallholders mapped

Geo Location & Mapping Features

The leading management information system platform enabling large businesses to control farm operations, make data-driven decisions, cost optimization and improve yields with proven system of traceability, from seed to table.

While conducting a Comprehensive GHG Assessment



Detailed annual GHG emissions and carbon removals from all value chain steps. See absolute GHG emissions or GHG intensity per ton material sources.



Emission Reduction Opportunities based on local potential for emission reduction and cost of intervention. See a comprehensive and easy to understand Value for Money in \$ / tCO2e of possible actions.

Landscape Conservation Projects



Climate-Smart Regenerative Agriculture

Within our landscape conservation projects, we support smallholder farmers to adapt climate-smart regenerative agriculture practices. Koltiva's Agronomists provide one-on-one coaching to smallholder farmers and distribute seedlings as required. All interactions are recorded within our KoltiTrace platform to measure the impact of climate action on the ground.

Conservation of community forest area

We identify high-risk forest areas surrounding mills and smallholder farmers and create community-based conservation projects. Through satellite data and our boots-on-the-ground, we monitor and act on any encroachment in a conserved forest area.



Thank You

 **KOLTIVA**

BEYOND
TRACEABILITY